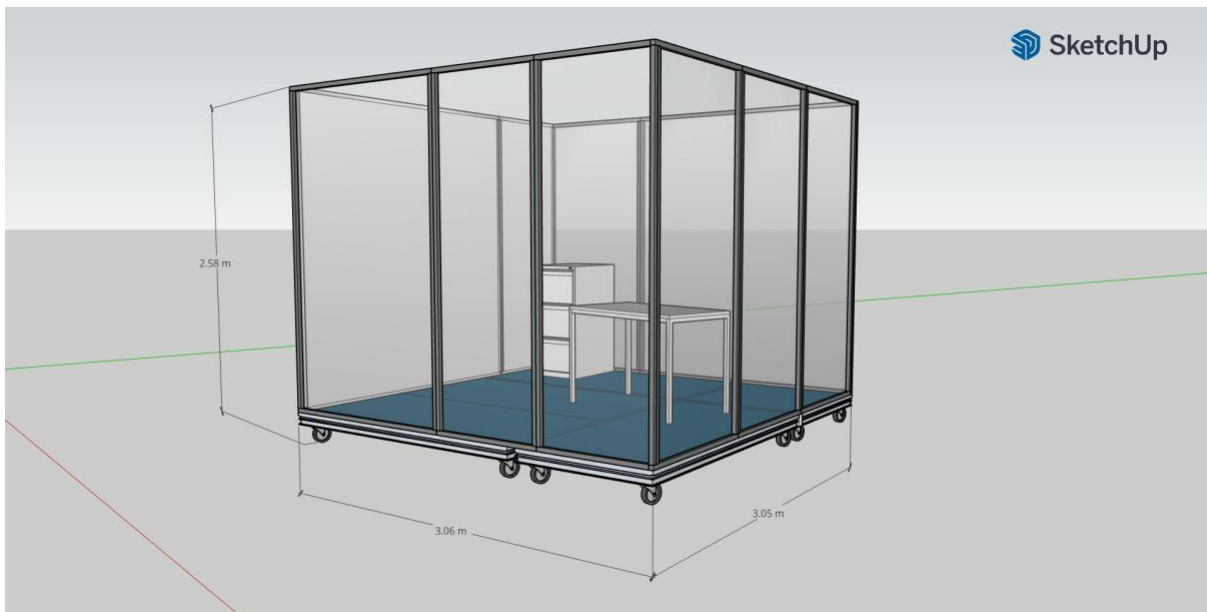
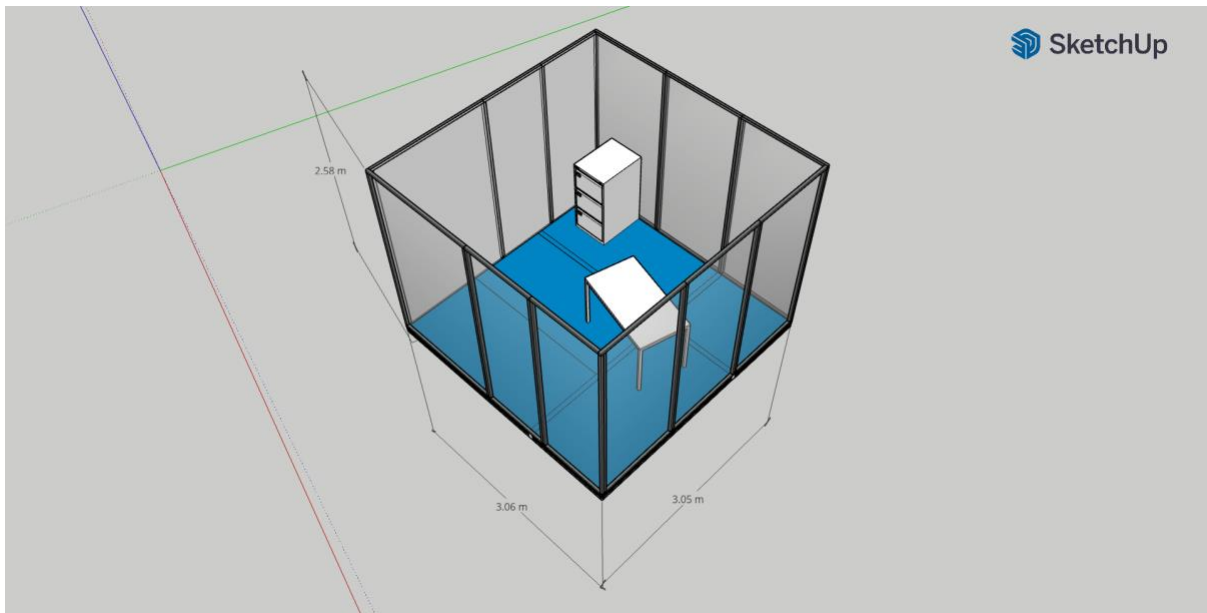


The Insider Tech

Scenography:

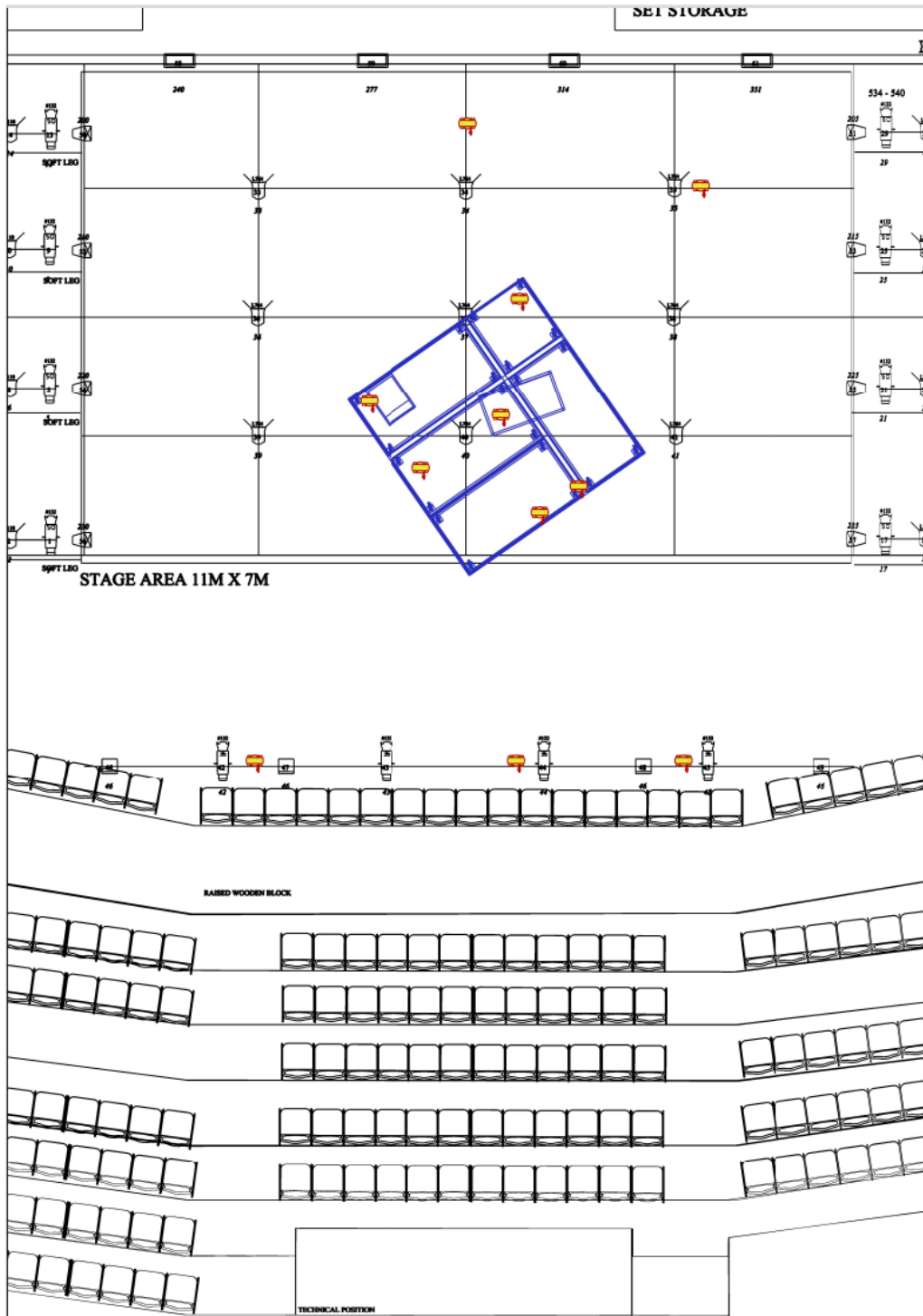
We bring a plex box (could be on rollers, but preferably not) approx. 3x3 meters. We need space backstage during the festival, to "park" the plex box when we are not performing in the case that it can't be on stage between shows. In case it's possible we bring black stones as well placed on the front bottom of the box.

In addition to this, we need a black floor, backdrop, and side drapes.



Light:

We will bring 9 pcs. Robe Robin LEDbeam150. and 2 pcs. Robe perfect
It is necessary that the lamps can be fixed during the entire festival, and not moved. Other groups are of course welcome to use our lamps in the meantime, as long as they are not moved or refocused.



Sound:

The sound is supplied to the audience via individual headphones. This means that all audience members must have a set of headphones. The headphones are on cable, which is supplied via multi-cables that are pulled between the rows of chairs. It is necessary that most of the cabling for the headphones can remain in place during the entire festival/period. We are of course careful not to get in the way of the audience or other groups.

We also want to access the venue's PA system, and if possible, set up a set of sub speakers under the audience.



Video projectors:

We bring two video projectors, which are placed on the floor.

The 2 video projectors, and some various rack boxes, we also like some backstage storage space for (max 1X1 meter), when we are not performing.

FOH

We bring 2 pcs. computers and our own sound mixer.

Before the show

It is important that we have had thorough contact with the venue before the festival/show. Especially the large headphone setup, which requires thorough planning and communication with the venue. We want to be as well prepared as possible, and hope you can help with a thorough description of your audience tribune structure, perhaps you have drawings or pictures?

Regards

Tech- and Stage Manager, Teater Katapult